



ST GEORGE'S
SCHOOL FOR GIRLS, EDINBURGH

Prospectus Supplement

For entry in 2020 - 2021

Contents

Admissions	4
Fees	6
Academic Awards	7
Bursaries	8
OGA (Old Girls' Association)	9
Academic Curriculum	9
Curriculum Structure – Remove (P7) to Upper 6 (S6)	10
Fifth Form Courses (S3 and S4)	11
Sixth Form Courses (S5 and S6)	12
Examination Results 2020	13
Examination Results Comparison Tables 2015 - 2019	14
Destinations of Leavers	15
Co-curriculum	17
Dates of Session	18
School Transport Routes	19
School Council	22
School Leadership Team	22
Location	23

Admissions

Visiting the School

Individual Visits

It is important that you visit the school if you can. This will give you and your daughter an opportunity to meet with the Head and other key staff and have a tour of our campus with some of our current students.

An individual visit can be arranged with the admissions department at any time and is the best way to get a feel for the school and learn what life is like at St George's. We also offer virtual tours and video calls for families living some distance from the school and if the campus is closed to visitors.

Taster Days & Overnight Stays

After a visit we may recommend that your daughter joins us for a full 'taster' day. This is a great opportunity for your daughter to experience a normal day at St George's and a chance for her to meet her peer group. A 'buddy' is always appointed and your daughter will attend lessons, sports and activities alongside her buddy. Overnight stays in our boarding house can also be arranged as part of the 'taster' day.

Open Days

St George's holds an annual whole school Open Day in late September or early October, and Junior School and Nursery Open Mornings and Afternoons in the spring and summer terms. Prospective students, their parents, guardians and friends are warmly invited to attend.

Entry Procedures

We welcome applications for any year group where places are available.

Year Groups

Nursery 3-5 years

Junior School P1-P5 5-9 years

Lower School P6, P7 (Remove), S1 (Lower 4) 10-13 years

Upper School S2 (Upper 4), S3 (Lower 5), S4 (Upper 5) 13-15 years

Sixth Form S5 (Lower 6), S6 (Upper 6) 16-18 years

Application Process

Entry is conditional on the satisfactory outcome of an assessment by the school, whether informal or formal. Offers of places are made in writing by the Head. A registration fee of £75 (£25 Nursery) is required to cover administrative costs.

For places in P1 and S1 (Lower 4), commencing at the start of any school year, offers are made in the February before the start of that session. Offers for places commencing at any other time during the school year, or for August in any year group other than P1 and S1, can be made from 30 October 2020.

Entry to Nursery

Girls and boys from the age of 3 years are assessed by the Head of Nursery to ensure that they are ready for activities, play, and learning. Communication and social skills will also be assessed. The Head of Nursery will advise the Head whether a nursery place should be offered. The school welcomes boys up to the start of the nursery pre-school year.

Entry to P1-P5

Applicants are invited to spend a full day with the class of girls to which admission is sought. Following informal assessment, the class teacher will advise the Head whether a place should be offered. Parents are asked to provide the most up-to-date school report for their daughter with their completed application.

Entry to P6-S6

Applicants are expected to complete entrance tests comprising of papers testing English language, mathematical and reasoning (verbal and non-verbal) ability. Places will be allocated based on performance in these tests and evidence from the school report. Parents are asked to provide the most up-to-date school report for their daughter with their completed application.

Equal Opportunities

The school does not discriminate against girls on the grounds of disability, race or religion. We will make any necessary reasonable adjustment to accommodate girls who demonstrate the ability to benefit from an education at St George's, and who have a disability. Parents are asked to bring any disability or learning difficulty to the attention of the school. Any major health concerns should also be raised with the school during the admissions process.

English as a Second Language Candidates (ESOL)

Candidates for whom English is a second or other language sit the usual entrance assessments and a specific ESOL assessment which will be used to ascertain whether their English is at a sufficient level for accessing the curriculum. A place will not be offered if the applicant is unlikely to reach this level before joining the school. ESOL teaching support is offered at an extra cost. Please see our fees section (page 6) for details.

International Students

All international students require a UK resident guardian, preferably in the Edinburgh area, but usually in Scotland. The guardian acts on behalf of parents in the UK, often looking after students during half term and weekend holidays, or in an emergency. We must be able to contact the guardian in an emergency. We can provide details of reputable guardianship agencies.

All pupils must fulfil UK visa and immigration regulations for study in the UK. Pupils wishing to live in the UK under the Tier 4 Child Student route should inform the admissions department at the time of application and follow the appropriate advice.

In light of the increased complexity surrounding the Visa application process and the importance of getting it right, we require all applications to be made with Newland Chase, a firm of immigration specialists. An additional cost will be incurred for this service.

Boarding Places

The usual admissions assessment for the appropriate year group will apply. These assessments can be sent to the student's school if they are unable to sit them at St George's. For international students and for those who live some distance from the school, an online virtual interview will be offered with the Head of Boarding, who is also a member of the academic staff and a deputy head of the school. Parents who are not UK national and/or who are not domiciled in the UK are also required to pay a refundable deposit of £3,000 when a boarding place is accepted.

Siblings

Wherever possible, when siblings of pupils at the school reach a satisfactory standard in entrance assessments, they will be offered places, provided that places are available.

Transition

Although it is expected that girls will move from Nursery into P1 and from P5 into P6 (the start of Lower School) and beyond, automatic transition may not always be appropriate.

The Head will advise parents if it would be inadvisable or inappropriate for their daughter to make the relevant move. The Head of Nursery will advise the Head if she judges any girl unready to start in P1.

The decision to allow transition at any stage will remain with the Head.

Assessment Dates for Entry in August 2021

For P1 and S1 (Lower 4) there are specific dates when the girls are asked to come in for assessment; for other year groups, assessments can take place at a mutually convenient time.

P1 Entrance Assessment date January 14 2021.

S1 Entrance Assessment dates January 19 and 22 2021.

Accepting a Place

Completed acceptance forms should be sent to admissions. A refundable deposit of £300 should be paid as a final entry fee when the offer of a place is confirmed. Deposits will be offset against the pupil's account for the final term.

We invite pupils joining S3 (Lower 5) and S5 (Lower 6) to an information evening at school to discuss courses and subject choices. All new students will receive information on induction days in the summer.

For all admissions enquiries, please contact the Admissions Department, T: 0131 311 8008 or E: admissions@stge.org.uk

Detailed information is also available on our website www.stge.org.uk.

How much notice do I have to give if my child is leaving?

We require at least one term's notice of the date when a student will leave St George's. This must be given in writing to the Head. If we do not receive this notice we will charge fees for one term in lieu of notice. A term's notice is also required if you intend to change a boarding place to a day place.

Fees for Session 2020 -2021

Junior School (5 – 9 years)

P1 & P2 £2990 per term (£8970 per year)

P3, P4 & P5 £3485 per term (£10455 per year)

Lower School (10 – 12/13 years)

P6 £3860 per term (£11580 per year)

P7 (Remove) and S1 (Lower 4) £4355 per term (£13065 per year)

Upper School (12 – 18 years)

S2 (Upper 4) – S6 (Upper 6) £4900 per term (£14700 per year)

Boarding

P6 £9105 per term (£27315 per year)

P7 (Remove) and S1 (Lower 4) £9600 per term (£28800 per year)

S2 (Upper 4) – S6 (Upper 6) £10145 per term (£30435 per year)

Ad hoc overnight £60 per night

Flexi-boarding fees are available for 2-5 nights on request

Lunches P1 upwards £3.95 per day (included in boarding fee)

Note: Nursery fees including wrap-around care costs are available on our website and in our nursery information booklet.

Frequently asked questions about school fees and other costs

Whom do I contact about financial matters?

All financial matters relating to the school are managed by our Business Director, Mr Jeremy Harper **E** jeh@stge.org.uk **T** 0131 311 8000.

What does the school fee cost cover?

The fee covers all costs of tuition including textbooks, stationery and personal accident insurance. Junior School fees include costs for all non-residential day trips. Boarding fees include all residential costs, but not trips or extras.

What other costs might I have?

School Uniform

You will be required to purchase uniform, sports kit and other items of equipment. Uniform can be purchased either new from Stevensons who are our nominated supplier, or second-hand from the Uniform Exchange. This is run by parents. Current Uniform Exchange opening times are available on the school website.

School Lunches

School lunches are charged as a separate item along with the tuition fees in advance of each term from P1 upwards. S5 and S6 (Sixth Form) girls have the option to bring a packed lunch.

Trips

Where year group and individual trips and visits organised by the school incur external costs e.g. travel, equipment, entrance fees etc., a charge is made to cover these costs. The charge is advised individually.

Co-curricular Clubs and Activities

Many of our co-curricular clubs such as art, drama and hockey are covered in our fees. However, some do incur a charge if an external supplier is employed.

Details of these and their costs are available on the parents' schoolpost system.

Examination Fees

All exam fees are charged as an extra. This includes SQA, GCSE, AS and A-Level examinations.

Music Tuition

Music lessons are £29.00 per lesson of 35 minutes

Group lessons including recorder group are charged according to the number in the group.

Hire of instrument is £50.00 per term (Primary violins £35.00).

English for Students of Other Languages (ESOL)

ESOL is charged in arrears.

Based on seven 35 minute lessons per week, the charge is £882 per term

St George's + (wrap-around care)

Wrap-around care, (St George's +), is available at St George's throughout the year (with the exception of the Christmas holiday and the last three days of the summer holiday), from the end of the school day during term time until 6.00pm, and all day from 8am during the school holidays until 5.00pm.

St George's+ After School Care is available every day for Nursery to P5 children from 3.10pm. It offers a range of sessions to allow children to attend co-curricular activities. Costs are charged per half hour. After School Care is available every day for P6 to L4 children from 3:50pm. Pupils have the option of staying until 6:00pm or extending this by up to two hours to 8:00pm if they wish to take tea and study in Holdsworth House, the School's boarding facility

We also provide a breakfast club service for anyone needing to drop children off before the start of the school day in term time. This runs from 7.45am to 8.30am.

Holiday clubs are available (up to 8 years old) during the school holidays until 5.00pm (except during the Christmas holiday and the last three days of the summer holiday). Costs are charged per 5 hour session.

Details on all our charges are available from our website.

When are fee levels set and when do fees need to be paid?

Fees are normally reviewed and set in the summer term for the next session. Tuition fees and lunches are charged in advance and are invoiced termly. Extra subject fees such as music and some other extras are charged in arrears.

Is there a discount scheme for siblings?

Where three or more sisters are pupils at the same time, the third and subsequent sisters will receive a discount of one third of tuition fees. The third child discount does not apply for Nursery. A discount scheme is also available for those with brothers at Merchiston Castle School, Colinton, Edinburgh. For further details please contact our Business Director, Jeremy Harper.

OGA (St George's Old Girls' Association) Life Membership Fees

The life membership fee is £180, payable in 3 equal instalments of £60 across 3 terms during the first year of joining the school. Family discount applies.

Academic Awards

The school has no major endowments, but it is as generous as its funds will allow in offering academic awards and bursaries to those who cannot afford the full fee.

Academic Awards are available to candidates applying to enter the school at P7 (Remove), S1 (Lower 4), S2 (Upper 4) and S5 (Sixth Form). They are awarded as a result of a competitive selection process to candidates who perform especially well in their Entrance Assessments.

Level of Award

P7 (Remove) - two awards of £250

S1 (Lower 4) - two awards of £250

S2 (Upper 4) - two awards of £250

S5 (Sixth Form) - two awards of £250

These awards are generously funded by St George's Old Girls' Association.

Bursaries - Assistance with Fees

St George's seeks to be accessible to students from a wide range of social, economic and cultural backgrounds. The school recognises that parents wanting the very special education it gives to girls and young women may face sacrifices in meeting the fees.

Fee assistance is available to suitable candidates on a means-tested basis. Enquiries should be made to the Business Director: Mr Jeremy Harper
E jeh@stge.org.uk T 0131 311 8000.

Frequently asked questions about bursaries

What is the deadline for applying for a bursary?

Applications for bursaries need to be submitted by the 10 January of year of entry, though applications at other times of year will be considered if funds allow.

What is the application process?

Applications for bursaries should be returned to the Business Director's office by 10 January. The application will be confidential to the Business Director, but he may need to consult the Head, or the Finance and General Purposes Committee of the School Council. He will then decide on whether an award can be made and at what level. There is no process of appeal from this decision. If awarded, the bursary will be deducted from the tuition fee and will be shown on the fee note sent out by the Business Director. No actual payment is made to the parent.

How are bursaries awarded?

Bursaries are awarded on the basis of financial need. All applicants are required to complete an application form which provides details of their income and capital. Where there is no financial need, no bursary can be given. The level of award varies significantly and can be as much as 100%.

How many bursaries are awarded each year?

St George's has finite resources from which it can offer bursaries. A range of factors is considered in making the awards and there are no hard and fast rules. As a result, the number and size of bursaries can vary considerably.

When can bursaries be awarded?

The main point at which bursaries are awarded is at entry to S1 (Lower 4). In such cases the award will continue throughout the student's education at St George's. The level of award will be reviewed annually.

A limited number of awards are granted from P1 - S6, (St George's P1 - Upper 6). Levels of bursary are determined by the availability of bursary funds at the time. Hardship awards may be offered where there has been a change in financial circumstances which threatens the continuance of a child's education, but awards are also made to new applicants.

How should I apply for a bursary for my daughter?

In the case of new students, an application to attend St George's is required first. When making this application, parents should contact the admissions department if they wish their daughter to be considered for a bursary. They will then be sent a bursary application form to be completed and returned to

the Business Director. Parents of existing students seeking a bursary should contact the Business Director office directly for an application form.

What information is required?

The application form for a bursary requires details of family income and regular financial commitments, such as mortgage payments. Unearned income must also be shown. Details of other children in the family are required with information about their current status: whether they attend school, college or university, or are employed. This is intended to provide a clear picture of the family's position, to allow the Business Director to make a fair assessment. In some cases, the parents will be invited to a short meeting with the Business Director.

Are there conditions for the holding of a Bursary?

Bursaries are normally awarded on the basis that financial assistance with fees will be required for as long as the student remains at St George's. However, all awards are granted for one year and are then subject to review. If the financial position of the family changes, the Business Director should be notified. This may lead to a change in the level of the bursary. In all cases, bursaries are conditional upon the student's commitment to learning and appropriate standards of behaviour. A bursary may be withdrawn after a warning, in the event of serious misconduct, persistent misbehaviour or poor progress.

Are there other sources of financial assistance?

There are a number of educational and charitable trusts which provide assistance with tuition fees. In the majority of cases, these are to assist children who are already attending a fee-paying school and are unable to remain as a result of a change in financial circumstances. In addition, such trusts tend to be reluctant to commit funds for more than one or two years, and are most likely to consider applicants who are in the middle of examination courses. St George's encourages parents to apply for support where a good case can be made. Most trusts will contact the school directly to seek information about the student's commitment to learning and behaviour.

Further information on applications to trusts may be obtained from: The Scottish Council of Independent Schools, 61 Dublin Street, Edinburgh, EH3 6NL.

The Old Girls' Association

The 'OGA' is a Network for Life, geared towards developing and nurturing life-long relationships across the whole St George's Community, and is supported by the School's Foundation Office.

All members of the OGA, from nursery to older generations of alumnae, should feel a great sense of belonging and connection to St George's.

The Old Girls' Association package includes:

- Welcome letter
- Full lifelong access to the Foundation Office Network – an online database (registration required) with news, events and its own networking tool called NETWORK ST G's.
- 'Doddie' – the Dragon Mascot (leavers' gift)
- Hard and/or electronic copy of the Dragon Magazine which is produced twice a year and includes OGA news, general school news and alumnae features.
- Invitations to all events which include 10- year reunion, the annual summer lunch and London reunion.

Current life membership fee is £180, payable in 3 equal instalments of £60 across 3 terms during the first year of joining the school. Family discount applies.

Academic Curriculum

A Breadth of Curriculum and Flexibility of Courses

We provide a three-year broad-based secondary education before any subject specialisation, and a two-year GCSE course taken in Upper 5 (S4) before the Scottish Higher qualification. However, we use the Scottish National 5 qualifications from time to time, when they fit well with our needs.

Beyond GCSEs, we are committed to Scottish qualifications Higher in Lower 6 (S5) and Advanced Higher in Upper 6 (S6) because of their breadth, rigour and flexibility. The Scottish Higher is a university matriculation qualification in its own right and it remains the gold standard for entry to Scottish universities. Our applicants to good English universities often receive unconditional offers based on their Higher results.

The Advanced Higher, a one year course that builds on Higher and is rated higher than A level on a grade-for-grade basis (in UCAS tariff), has wide currency as an entry qualification for universities throughout the world. In most subjects the Advanced Higher requires original work – a dissertation, investigation or project – that gets students used to the more independent learning that will be required of them in Higher Education.

We also have a tradition of adopting the 'Best of British': we recognise the value of other, non-Scottish qualifications. In some subjects we offer A level as well as Scottish qualifications (though Higher and Advanced Higher are far more popular).

Curriculum Structure – Remove (P7) to Upper 6 (S6)

Girls commence their secondary education in Remove (P7). This is a year earlier than most schools in Scotland. In Remove, Lower 4 and Upper 4 (P7-S2) girls receive a broad general secondary education. Towards the end of Upper 4 (S2) subject choices are made for the two years of Fifth Form (S3 and S4). Girls study for 9 GCSE qualifications which are examined at the end of the Upper 5 (S4) year. Girls then choose five subjects to study at Higher in Lower 6 (S5), with most studying three subjects or more in Upper 6 (S6).

Remove, Lower 4 and Upper 4 Curriculum (P7-S2)

The table below gives a list of subjects studied by girls in Remove to Upper 4. Numbers in brackets give the period allocation..

Curriculum Area	Remove (P7)	Lower 4 (S1)	Upper 4 (S2)
Languages	English (5)	English (5)	English (5)
	Spanish (3)	#Language 1 (3)	**Language 1 (3)
	Latin (1) or Support for learning	#Language 2 (3)	**Language 2 (3)
	Carousel (1)**		
Mathematics	Mathematics (5)	Mathematics (5)	Mathematics (5)
Sciences	Science (4)	Biology (2)	Biology (2)
		Chemistry (2)	Chemistry (2)
		Physics (2)	Physics (2)
Social Studies	Geography (3)	Geography (2)	Geography (2)
	History (3)	History (2)	History (2)
	Modern Studies (1) or Support for learning	Modern Studies (1)	Global Perspectives (2)
Religious and Moral	Religion & Phil (2)	Religion & Phil (2)	Religion & Phil (2)
Expressive Arts	Art (2)	Art (2)	Art (2)
	Drama (1)	Drama (1)	Drama (1)
	Music (1)	Music (1)	Music (1)
Technologies	ICT (1)	ICT (1)	ICT (2)
	Product Design (2)	Product Design (2)*	Product Design (2)*
		Food Studies (2)*	Food Studies (2)*
Health & well-being	PSE (1)	PSE (1)	PSE (1)
	PE (4)	PE (4)	PE (3)
	Health Education (1)		

* Courses run for half a year

** Language Carousel consists of taster lessons in Mandarin Chinese, Latin, French and German

Some able girls elect to take a third language which is offered during a lunchtime and after school class

GCSE Courses for the Fifth Form (S3 and S4)

Each girl takes English Language and English Literature or ESOL (for non-native speakers), Mathematics, at least one Science, at least one Social Science, at least one language other than English, and an elective programme choosing from the Higher Project Qualification (HPQ) or a carousel of skills development.

The following GCSE courses will be available for the Fifth Form in 2020-2021:

Subject	Qualification
Art	GCSE
Biology	GCSE
Business Studies	GCSE
Chemistry	GCSE
Chinese	GCSE
Classical Greek (U5 for examination in L6)	GCSE
Computer Studies	GCSE
Design & Technology	GCSE
Drama	GCSE
Elective programme	Higher Project Qualification or a carousel of skills
English Language, English Literature or ESOL	GCSE
Food Preparation and Nutrition	GCSE
French	GCSE
Geography	GCSE
German	GCSE
History	GCSE
Latin	GCSE
Mathematics	GCSE
Music	GCSE
Physical Education	National 5 Level
Physics	GCSE
Religious Studies	GCSE
Spanish	GCSE
Support for Learning	N/A

Departments may be considering additional courses.

Some courses will run only if there is sufficient interest.

Courses for the Sixth Form (S5-S6)

Girls choose five subjects to study at Higher in Lower 6 (S5), with most studying three subjects or more in Upper 6 (S6).

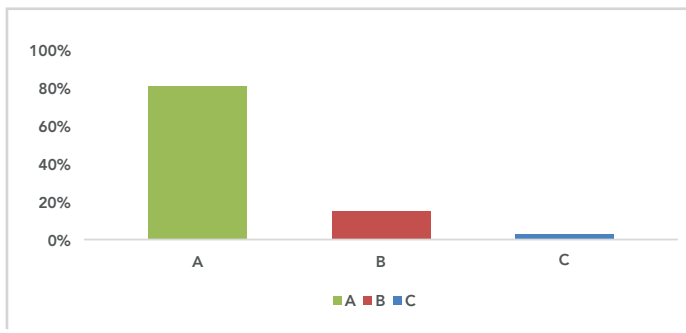
Subject	Lower 6 (S5) Exam Level	Followed in Upper 6 (S6) by Exam Level
Art	Higher	A-Level
Art (Textiles)	AS	A-Level
Biology	National 5	Higher
	Higher	Advanced Higher
Business Management	National 5 / Higher	Advanced Higher
Chemistry	National 5	Higher
	Higher	Advanced Higher
Chinese	National Units, National 5, Higher, Advanced Higher, GCSE; AS & A Available in L6 and U6 as appropriate	
Classical Studies	Higher	Advanced Higher
Computing	Higher	Higher
Drama	Higher	Advanced Higher
Economics	Higher	Advanced Higher
English	National 5	Higher
	Higher	Advanced Higher
French	Higher	Advanced Higher
Geography	Higher	Advanced Higher
German	Higher	Advanced Higher
Graphic Communication	Higher	Advanced Higher
Practical Cooking	National 5	
History	Higher	Advanced Higher
Latin	Higher	Advanced Higher
Mathematics	National 4/5	Higher
	Higher	Advanced Higher
Mechanics		Advanced Higher
Modern Studies	Higher	Advanced Higher
Music	Higher	Advanced Higher
Photography		Higher
Physical Education	Higher	Advanced Higher
Physics	National 5	Higher
	Higher	Advanced Higher
Design & Manufacture	Higher	Advanced Higher
Psychology		Higher
RMPS	Higher	Advanced Higher
Spanish	Higher	Advanced Higher
Sports Studies	National Units	National Units
Statistics		Advanced Higher
Support for learning	N/A	N/A

Some courses will only run if sufficient interest.

Examination Results 2020

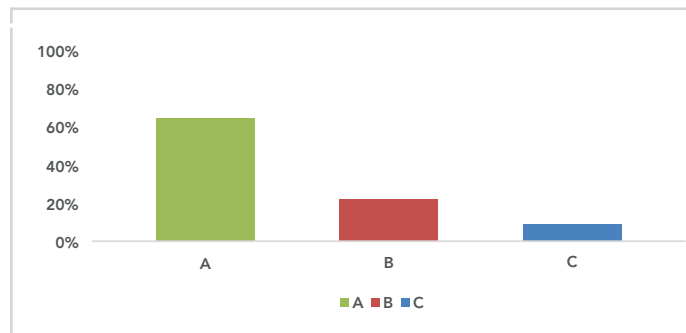
Upper 6 Advanced Higher Results 2020 A to C

Grade	A	B	C
2020	81%	15%	3%



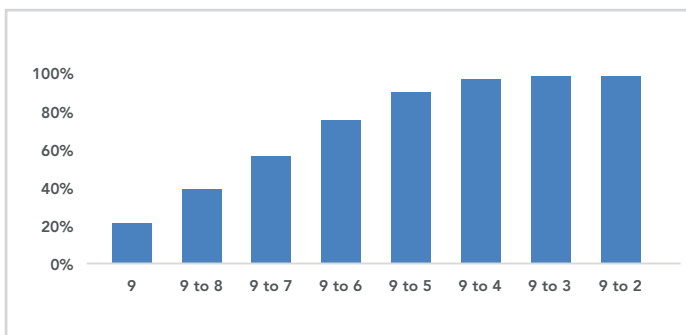
Lower 6 Higher Results 2020 A to C

Grade	A	B	C
2020	65%	22%	9%



Upper 5 GCSE Results 2020 9 to 3

Grade	9	9-8	9-7	9-6	9-5	9-4	9-3	9-2
2020	22%	39%	57%	75%	90%	97%	99%	99%

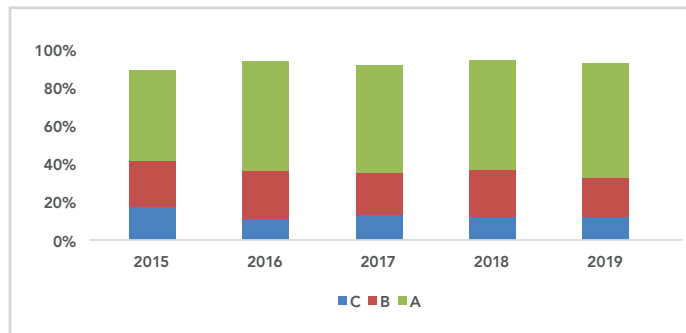


The examination results in 2020 have not been included in the comparison tables on the next page due to the change in the national examination grading process during COVID-19.

Examination Results Comparison Tables 2015 - 2019

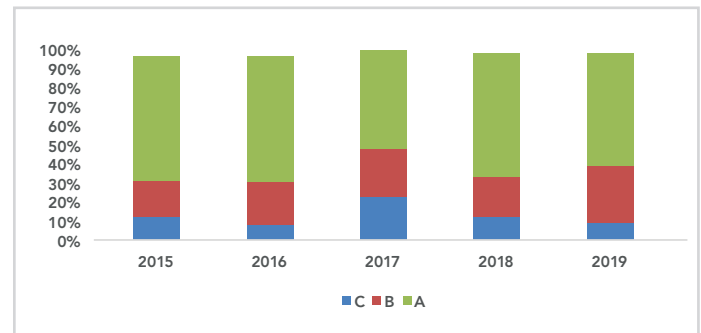
L6 (S5) Higher A to C Comparison 2015 to 2019

Grade	A	B	C
2015	47%	25%	17%
2016	58%	25%	11%
2017	57%	22%	13%
2018	58%	25%	12%
2019	62%	20%	12%



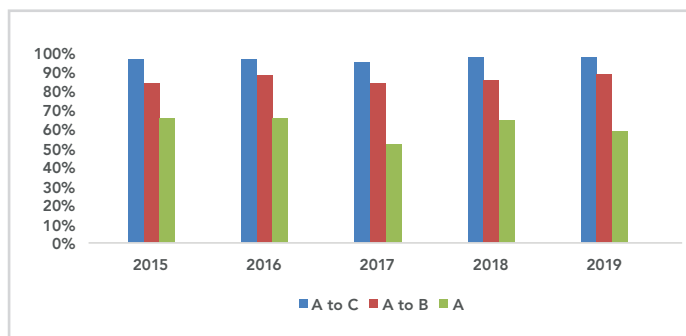
U6 (S6) Advanced Higher A to C Comparison 2015 to 2019

Grade	A	B	C
2015	66%	19%	12%
2016	66%	23%	8%
2017	52%	25%	23%
2018	65%	21%	12%
2019	59%	30%	9%



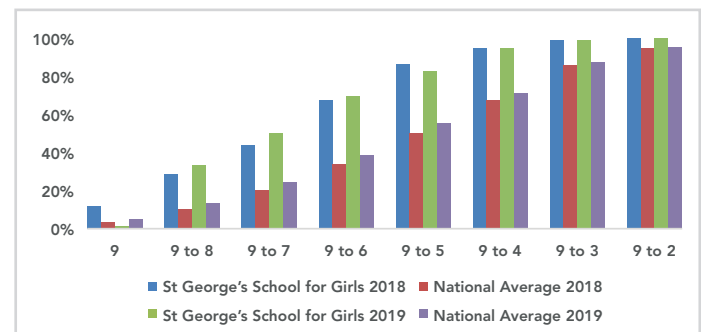
U6 Advanced Higher A, A to B, A to C Comparison 2015-2019

Grade	A to C	A to B	A
2015	97%	85%	66%
2016	97%	89%	66%
2017	96%	85%	52%
2018	98%	86%	65%
2019	98%	89%	59%



U5 (S4) GCSE 9-1 2018 and 2019

	9	9 to 8	9 to 7	9 to 6	9 to 5	9 to 4	9 to 3	9 to 2
St George's 2018	12%	29%	44%	67%	86%	94%	98%	99%
National average 2018	4%	11%	20%	34%	50%	67%	85%	94%
St George's 2019	16%	33%	50%	69%	82%	94%	98%	99%
National average 2019	5%	13%	24%	38%	55%	71%	87%	95%



Upper 6 (S6) Leavers' Destinations 2020

Medical Sciences

Edinburgh College	Care and Administration Practice
Valencia Catholic University	Dentistry
University of Bristol	Medicine
University of Glasgow	Medicine
University of Glasgow	Medicine
University of Bristol	Pharmacology
Edinburgh College	Route to Health Professions

Mathematics, Science, Engineering and Geography

Heriot-Watt University	Actuarial Science
University College London	Biochemistry
University of Strathclyde	Chemical Engineering
The University of Edinburgh	Chemistry
University College London	Chemistry with Mathematics
The University of Edinburgh	Civil Engineering
The University of Edinburgh	Computer Science and Mathematics
University of Leeds	Computer Science with Artificial Intelligence
Queen's University, Belfast	Food Quality, Safety and Nutrition
University of Durham	Geography
University of Manchester	Geography
Newcastle University	Geography
University of St Andrews	Geography
University of St Andrews	Geography
The University of Edinburgh	Geography and Economics
University of Bristol	Geography with study abroad
University of St Andrews	Mathematics
University of Durham	Natural Sciences
University of York	Physics with a Foundation Year
University of Glasgow	Product Design Engineering
Abertay University	Psychology
Queen Margaret University	Psychology
University of Aberdeen	Psychology
University of Aberdeen	Psychology
Northumbria University	Psychology
University of Strathclyde	Psychology and Social Policy
University College London	Statistics, Economics and Finance
The University of Edinburgh	Theoretical Physics

Law

London School of Economics and Political Science	Law
The University of Edinburgh	Law
University of Exeter	Law
Edinburgh Napier University	Law

English, Drama and Music

University for the Creative Arts, Farnham	Acting and Performance
University of Dundee	English and Politics
University of Exeter	English with Study in North America
Robert Gordon University	Media
The University of Sheffield	Music and Philosophy

History, Politics & Economics, Theology, International Relations and Sociology

University of Leeds	Criminal Justice and Criminology
Edinburgh Napier University	Criminology
University of Chester	Criminology and Sociology
The University of Edinburgh	History
The University of Edinburgh	History of Art
University of Exeter	History with Employment Experience
The University of Edinburgh	International Relations
London School of Economics and Political Science	International Relations and History
University of Vermont	Liberal Arts
The University of Edinburgh	Philosophy
University of Oxford	Philosophy, Politics and Economics
The University of Edinburgh	Social Policy and Sociology
Edinburgh College	Social Science
Edinburgh Napier University	Social Sciences
Edinburgh Napier University	Social Sciences
University of Glasgow	Sociology/Politics
University of Glasgow	Sociology/Social and Public Policy
University of Glasgow	Sociology/Social and Public Policy

Languages and Linguistics

The University of Edinburgh	Chinese and Economics
University of St Andrews	French and Russian
The University of Sheffield	Modern Languages and Cultures

Art, Design and Architecture

University of Strathclyde	Architectural Studies
Robert Gordon University	Digital Media

Business Management

University of Strathclyde	Business
University of Glasgow	Business and Management
University of Strathclyde	Business Enterprise
University of Aberdeen	Business Management
University of Leeds	Economics and History
University of Bristol	Economics and Politics
Robert Gordon University	International Business Management
University of Bath	Management with Marketing (with Professional Placement)

Education

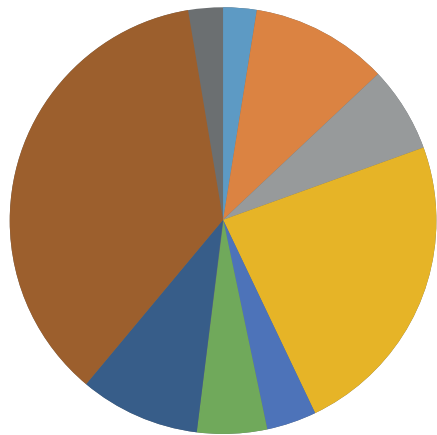
The University of Edinburgh	Childhood Practice (degree apprenticeship through Carousel Training)
Queen Margaret University	Education Studies (Primary)

Gap Year

Six students are taking a gap year, all of whom have confirmed university places for 2021

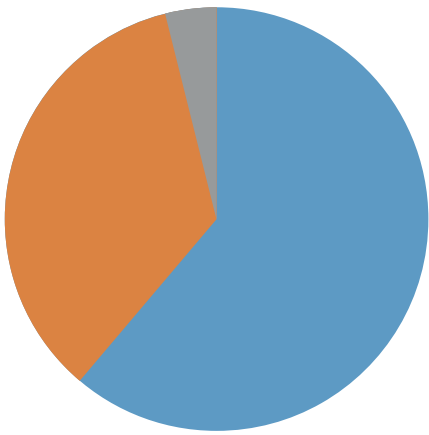
Upper 6 (S6) Leavers' Destinations 2020

2020



- Art, Design and Architecture
- Business Management and Economics
- English, Drama and Music
- History, Politics & Economics, Theology, International Relations and Sociology
- Languages and Linguistics
- Law
- Medical Sciences
- Mathematics, Science, Engineering and Geography
- Education

Destination



- Scotland
- England
- Other

Co-curriculum

Enrichment beyond the core academic curriculum at St George's is an important part of each girl's development within the school environment. We offer a rich and diverse range of activities and opportunities that help her to develop her passions or explore new interests.

The co-curricular programme offers challenge, service to others, group co-operation, team participation and leadership; while supporting risk taking and building resilience in an environment where abilities and talents are recognised and nurtured. See our full Co-Curriculum leaflet on the website. Please note that during the COVID-19 pandemic we are running an abbreviated programme.

Sports

Athletics
Badminton
Ballet
Basketball
Cricket
Cross-country running
Dance
Fencing
Fitness
Football
Golf
Gymnastics
Hockey
Indoor hockey
Judo
Lacrosse
Netball
Orienteering
Rounders
Running
Skiing
Squash
Swimming
Table tennis
Tennis
Touch rugby
Volleyball

Music

Brass Consort
Cantate
Ceilidh Band
Clarinet
Concert Band
Dragon Ensemble
Flute Ensemble
Guitar Ensemble
Lunchtime Recitals
Lyrica
Jazz Band
Saxophone Club

Orchestras
Wind Ensemble
Big Band
Choirs
Recorder
Strings

Clubs

Amnesty International
Book Buddies
Chess
Chinese
Classics
Craft
Creative Thinkers
Criminology
Debating
Destination Imagination
Drama
Eco Club
Football
French
Geography
Greek
History
Hot Chefs
Independent Women
IT
Life Drawing Class
Magazine Art
Mindfulness
Model United Nations
Philosophy
Rangers Club (bushcraft)
Science
Scottish Dancing
Scripture Union
Spanish
Story
Young Engineers
Young Writers
24/7

Art

Animation
Art Club
Drawing
Textiles

Drama

Productions this session:

The Lockdown Time Capsule -
Upper School students are creating their own pieces of drama using their personal experiences in lockdown as a stimulus. This will be produced as a video production.

Teamwork and Leadership

Duke of Edinburgh Awards
Combined Cadet Force
Debating
Model United Nations

Charity and Service

Charities Committee
Amnesty International
Eco

Challenge and Exploration

Outdoor Learning
Student Exchange Programme
Educational Trips

Enterprise and Business

Independent Women Magazine
Youth Philanthropy Initiative
Young Enterprise

Academic Enrichment

Competitions and Challenges
Friday Series Lectures
Masterclasses
Mock interviews
Student Societies
The 'Big Question'
University admission preparation

U6 Enrichment Programme
Visiting speakers

Dates of Session 2020-2021

Autumn Term Starts: *Thursday 20 August 2020

Half Term: Monday 12 October to Friday 23 October 2020 (inclusive)

School Resumes: Monday 26 October 2020

Term Ends: Friday 18 December 2020

Nursery will be dismissed at 12 noon.
Junior School will be dismissed at 12 noon.
Lower School will be dismissed at 12 noon.
Upper School will be dismissed from St Giles Cathedral after the Carol Service at approximately 4.45 pm.

Spring Term Starts: *Monday 11 January 2021

Half Term: Monday 8 to Friday 12 February 2021 (inclusive)

School Resumes: Monday 15 February 2021

Term Ends: Wednesday 31 March 2021

Summer Term Starts: * Monday 19 April 2021

Half Term: Monday 31 May – Wednesday 2 June 2021 (inclusive)

School Resumes: Thursday 3 June 2021

Term Ends: Wednesday 30 June 2021

Nursery from 11.30 am
Junior School from 11.30 am
Lower & Upper Schools approx. 12 noon

* Boarders return the day before the start of term

Dates of Session 2021-2022

Autumn Term 2021 Starts: *Tuesday 24 August 2021

Half Term: Monday 18 October to Friday 29 October 2021 (inclusive)
(School closes for Half term on Friday 15 October at 3:50 pm)

School Resumes: Monday 1 November 2021

Term Ends: Tuesday 21 December 2021

Nursery will be dismissed at 12 noon.
Junior School will be dismissed at 12 noon.
Lower School will be dismissed at 12 noon.
Upper School will be dismissed from St Giles Cathedral after the Carol Service at approximately 4.45 pm.

Spring Term 2022 Starts: *Tuesday 11 January 2022

Half Term: Monday 14 to Friday 18 February 2022 (inclusive)
(School closes for Half term on Friday 11 February at 3:50 pm)

School Resumes: Monday 21 February 2022

Term Ends: Friday 1 April 2022

Summer Term 2022 Starts: *Tuesday 19 April 2022

Half Term: Monday 30 May, Tuesday 31 May and Wednesday 1 June 2022 (inclusive)

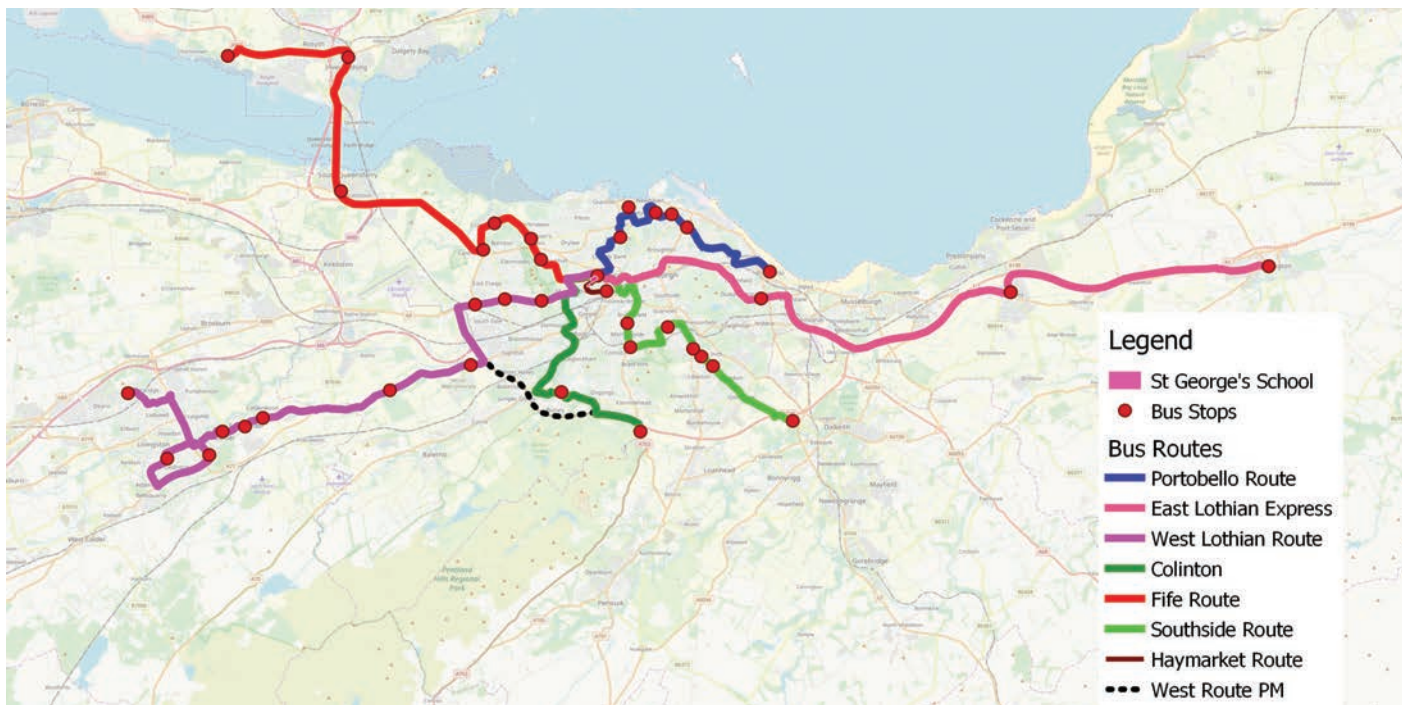
School Resumes: Thursday 2 June 2022

Term Ends: Thursday 30 June 2022

Nursery from 11.30 am
Junior School from 11.30 am
Lower & Upper Schools approx. 12 noon

* Boarders return the day before the start of term

School Transport



Bus Routes Map

Bus Timetables and Pricing All times are subject to review. Please check our website www.stge.org.uk for up to date times.

Haymarket Run AM (2-3 trips made each morning depending on time)		
Time	Pick up point / Drop off point	Cost
8.00 am to 8.35 am	Devonplace, Haymarket (outside No1 Osborne Terrace)	Free Service
	St George's School For Girls	

Haymarket Run PM		
Time	Pick up point / Drop off point	Cost
3.55 pm 4.10pm 5.05 pm & 5.35pm	St George's School For Girls, Upper School (just before the zebra crossing)	Free Service
	Haymarket Train Station only (This service is restricted to the use of students with an onwards journey from Haymarket)	

East Lothian Express Route AM		
Time	Pick up point	Cost
7.30 am	Haddington Police Station	£4.00
7.45 am	Tranent Church Street (The George Johnstone Centre)	£4.00
8.00 am	Milton Road West (stop after Milton Gardens North)	£3.00
8.25 am	St George's School For Girls	

East Lothian Express Route PM		
Time	Pick up point	Cost
4.15 pm	St George's School For Girls	
4.40 pm	Milton Road West (stop before Durham Road)	£3.00
5.00 pm	Tranent Church Street (The George Johnstone Centre)	£4.00
5.15 pm	Haddington Police Station	£4.00

Colinton Route AM (PM Return available, see 'West Lothian Route PM')

Time	Pick up point	Cost
7.50am	Hillend Bus Terminus	£2.50
8.05 am	Westgarth Avenue, Colinton	£2.20
8.30 am	St George's School for Girls	

Portobello Route AM

Time	Pick up point	Cost
7.35 am	Portobello Town Hall	£3.00
7.45 am	Duke Street	£2.20
7.52 am	Ferry road (1 st bus stop)	£2.20
7.55 am	Trinity Primary School	£2.20
7.58 am	Clark Road (bus stop at St Serf's Church)	£2.20
8.00 am	Lennox Row Tennis Courts	£2.20
8.10 am	Arboretum Place/Inverleith Place	£2.20
8.25 am	St George's School For Girls	

Portobello Route PM

Time	Pick up point	Cost
4.15 pm	St George's School For Girls	
4.30 pm	Arboretum Place/Inverleith Place	£2.20
4.35 pm	Lennox Row Tennis Courts	£2.20
4.38 pm	Clark Road (bus stop at St Serf's Church)	£2.20
4.40 pm	Trinity Primary School	£2.20
4.47 pm	Ferry road	£2.20
4.50 pm	Duke Street	£2.20
5.05 pm	Portobello Town Hall	£3.00

Inverkeithing Route AM only

Time	Pick up point	Cost
7.25 am	Limekilns Primary School	£4.00
7.40 am	Inverkeithing (stop near the train station)	£4.00
7.50 am	South Queensferry (Tesco Bus Stop)	£3.00
8.05 am	Barnton Shops	£2.50
8.10 am	Gamekeepers Road (Cramond Road North)	£2.50
8.15 am	Davidson Mains (Carpark at Tesco)	£2.20
8.20 am	Craigcrook Road (Before Loch Road)	£2.20
8.30 am	St George's School for Girls	

Southside Route

Time	Pick up point	Cost
7.20 am	Dobbies Garden Centre Bus Stop	£3.00
7.35 am	Northfield Parish Church	£2.50
7.40 am	Marmion Crescent	£2.50
7.45 am	Bus Stop before junction with Gilmerton Road	£2.50
7.50 am	West Mayfield	£2.20
7.55 am	Grange Loan (Junction Lauder Rd & South Lauder Rd)	£2.20
7.57 am	Charterhall Road (1 st bus stop after Blackford Ave)	£2.20
8.00 am	Cluny Gardens near Cluny Church	£2.20
8.05 am	Luca's Holy Corner	£2.20
8.25 am	St George's School for Girls	

West Lothian Route (Livingston) AM

Time	Pick up point	Cost
7.10 am	Knightsridge West Road (Stop at Herd Green)	£4.00
7.20 am	Alderstone Road (Stop after LIDL)	£4.00
7.25 am	Livingston South Station	£4.00
7.33 am	Mid Calder (opposite Fork & Field pub)	£4.00
7.35 am	East Calder (Tesco Express)	£4.00
7.50 am	Ratho Park (opposite Dalmahoy Hotel)	£3.00
7.55 am	Layby opposite Heriot Watt Park & Ride	£2.50
8.05 am	Glasgow Road (layby past bus stop after shell garage)	£2.20
8.10 am	St John's Road (stop opposite Guitar Guitar)	£2.20
8.15 am	Stop at the Zoo/Holiday Inn	£2.20
8.20 am	St George's School for Girls	

West Lothian Route (Colinton & Livingston) PM

Time	Pick up point	Cost
4.15 pm	St George's School for Girls	
4.45 pm	Colinton (Westgarth Avenue)	£2.20
5.00 pm	Bus stop on A71 (just after Heriot Watt Park & Ride)	£2.50
5.05 pm	Ratho Park	£3.00
5.20 pm	East Calder (Tesco Express)	£4.00
5.23 pm	Mid Calder (Fork & Field pub)	£4.00
5.30 pm	Livingston South Station	£4.00
5.35 pm	Alderstone Road (Stop opposite LIDL)	£4.00
5.45 pm	Knightsridge West Road (Stop at Herd Green)	£4.00

Bus Provider

Charlie Irons Coaches

Address Units 7-8 / Camps Industrial Estate, Kirknewton, EH27 8DF
Email charlie@ironscoaches.co.uk
Phone 0131 441 2222 / 07774927745

Bus Fees

Our bus fees range from £2.20 to £4 per journey depending on distance travelled (all prices can be found in our timetables section). Bookings are for a minimum of one term and costs are added to the school term fees in advance. If you start using the service during the term, costs are added to the following term's fees.

School Contact

All queries regarding the school transport should be directed to Peter Liddell, Assistant Facilities Director.

Address St George's School for Girls, Edinburgh, EH12 6BG
Email buses@stge.org.uk
Phone 0131 311 8038 / 07919593791

Booking Procedure

Please email buses@stge.org.uk in the first instance to find out more about the service and request the Booking Form and Behavioural Contract. Once received we will notify our bus provider and add the student to our list and then confirm the booking, providing there is adequate space available.

Rules for Students

It is important that certain guidelines are followed to ensure the safety of all pupils using the bus service. It is essential that behaviour is of the same high standard expected when at school. If the behaviour does not meet the high standard expected then the pupil will not be allowed to continue to travel on the bus. If you are concerned about the behaviour of someone else, please report this to the Assistant Facilities Director as soon as possible, so that the school can deal with the issue.

Getting the bus safely

- Be at the bus stop at least 5 minutes prior to the arrival of the bus;
- Wait at your designated stop in a safe place, back from the side of the road;
- Do not rush to the bus stop and always take care when crossing a road;
- Take your time when boarding the bus.

On the bus

- Take your seat promptly and sit properly, facing forward at all times; Always wear your seatbelt;
- Place bags under your seat or on your lap;
- Keep the aisle of the bus clear at all times;
- Talk quietly; the driver needs to concentrate to drive the bus safely;
- Eating or drinking is not permitted on the bus at any time with the exception of bottled water;
- No litter is to be left on the bus;
- Always listen to and follow the bus driver's instruction.

Leaving the bus safely

- Remain in the seat until the bus comes to a complete stop;
- Do not rush when leaving the bus and let the people at the front leave first. Do not push.

Lost Property

Please contact the bus operator directly if an item has been left on the bus. The drivers will always check the coaches and if items are found they will be kept at the coach depot for collection.

School Council

St George's is a charitable organisation with the School Council made up of independent governors, determining policy and strategy. The Council appoints the Head as the senior manager and members sit on the key school committees.

Members of Council

Mr Paul Brewer LLB (Hons) (Chair of Council)
Sheriff Linda Ruxton LLB (Hons) (Vice Chair)
Dr Robin Balfour Bsc (Hons) MB BChir (Cantab) DRCOG FPC MRCP
Mrs Susannah Crawford BA (Law)
Mr Lindsay Duguid BSc FRICS
Mrs Kate McDiarmid
Sheriff Ian Miller MA (Hons) LLB
Mrs Åsa Norrie MSc (Econ)
Mr Alastair Rae BCom (Hons) CA
Mrs Shona Thomson BSc (Hons) CA
Mr Adrian Watt BSc PGCE SQH
Mr Roderick Wylie ACIS

School Leadership Team 2020-2021

Head	Mrs Alex Hems MA (Oxon)
Senior Deputy Head	Dr Andrew de Ville BSc (Hons) PhD
Deputy Head, Pastoral	Mr Peter Verrecchia MA
Facilities Director	Miss Margaret Imlah MA (Hons)
Deputy Head, Boarding and Sixth Form	Mrs Jill Bryce MA (Hons)
Deputy Head, Academic Support and Co-curriculum	Mrs Sonia Edwards BA (Hons) MSc
Head of Lower School	Miss Mel Benson BSc
Head of Junior School	Mrs Sue Hay BEd
Business Director	Mr Jeremy Harper BAcc (Hons) CA

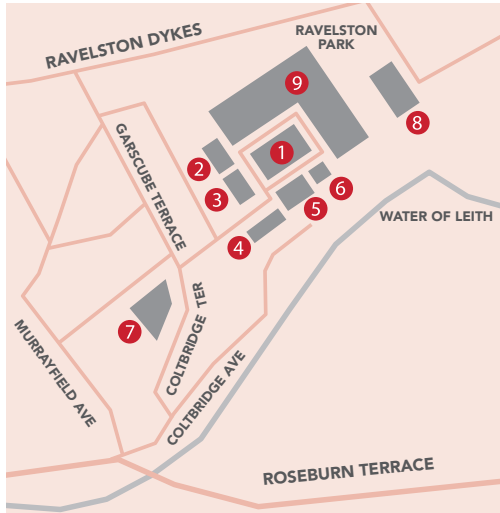
Head

Mrs Alex Hems MA (Oxon)

Secretary and Treasurer

Mr Jeremy Harper BAcc (Hons) CA

Location



- 1 Upper School
- 2 Robertson Music Centre
- 3 Junior School and Nursery
- 4 Sports Centre
- 5 St George's Centre
- 6 Art Studios
- 7 Lansdowne House and Lower School
- 8 Houldsworth House
- 9 Sports Pavilion, Astro, Sports Pitches and Uniform Exchange





ST GEORGE'S

SCHOOL FOR GIRLS, EDINBURGH

Garscube Terrace, Murrayfield, Edinburgh EH12 6BG

Independent day and boarding school for girls, 3-18 years

T 0131 311 8000 **E** office@stge.org.uk

OSCR Charity No: SC012632 Help with fees available

stge.org.uk    